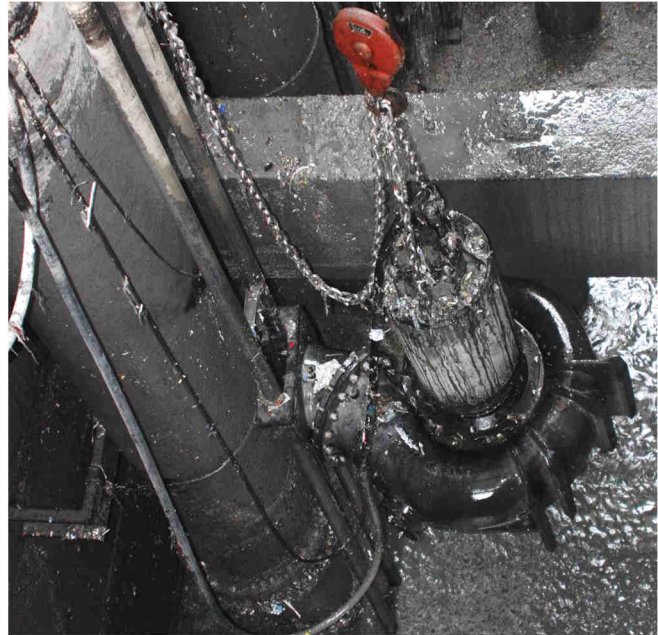


## Chunnan Industrial Wastewater Pumping

Application market	Wastewater
Market segment	Industrial Wastewater
Pumped medium	Wastewater from Industrial Site
Pump product	Immersible
Country	China



### Challenge

In a wastewater treatment plant, a reliable solution was required for pumping raw wastewater, mainly from an industrial area, most of it from a paper mill.

### Solution

Hidrostat supplied eight Screw Centrifugal Immersible Motor Pumps, pump body made of cast iron and the impeller of stainless steel RL03. RL03 is a chromium martensitic stainless steel and provides a good balance of corrosion resistance, hardness, and impact strength.

### Benefits

All pumps operate reliably, without signs of corrosion. High corrosion protection against the existing aggressive industrial waste water with the materials of construction used:

- stainless steel RL03 impeller
- and cast iron pump body

Quantity of units sold	8
Pump type	I16K-HD1 + IE130L6
Motor data	110 kW / 6 pole Immersible Motor
Material combination	Cast iron pump body and wear parts with stainless steel RL03 impeller
Duty point	Flow : 570 litres per second / Head : 13.5 meters
In operation since	2008